

AIRLIE SUMMIT
LUXE

DESIGN COLLECTION

PALMA
VALENTINE BUILDING DESIGNS

www.airliesummit.com.au

ALDER

Please read the important legal disclaimer at the end of this document. It may affect your legal rights.

Palma – Crafted for Climate. Designed for Outlook. Defined by Elegance.



Where Design Embraces the Landscape

Palma is the embodiment of tropical modernism—an architectural response to climate, place, and view. Poised lightly on the land yet grounded in its context, Palma invites nature in while framing the world beyond.

This is a home designed not only to be lived in, but to be experienced—morning light through open pavilions, afternoon breezes dancing across glass and timber, evenings unfolding beneath deep overhangs and open skies.



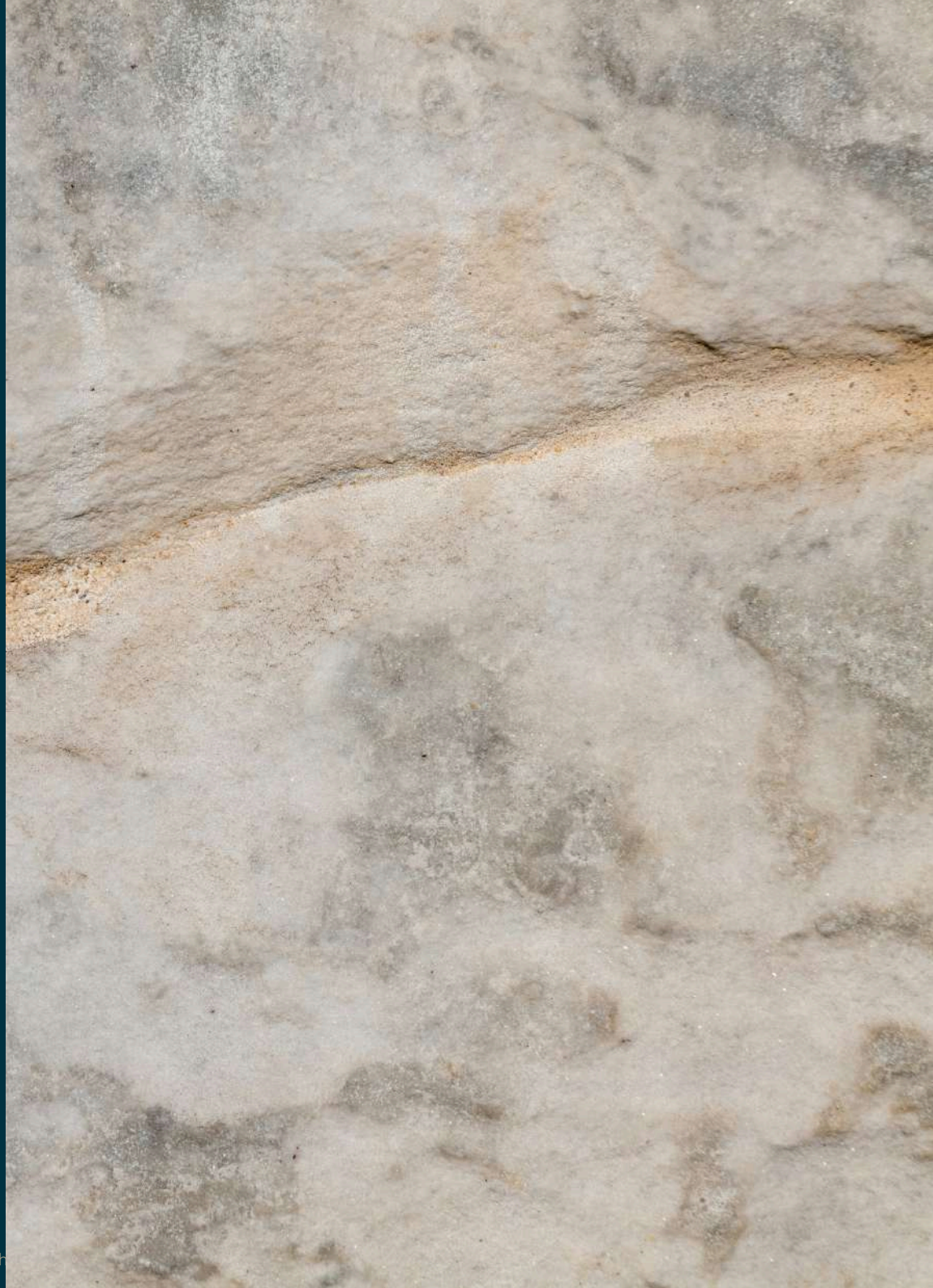
Airlie Summit Luxe Design Collection

Disclaimer: Images shown are computer-generated (CGI) and are for illustrative purposes only. They may not accurately represent real-life products, features, or outcomes. Do not rely solely on these images for decision-making. For accurate and complete information, please consult Airlie Summit representative.

Curated for Climate and Connection

Every detail of Palma has been considered through the lens of refined tropical living. The home's form is defined by natural ventilation paths, passive solar orientation, and fluid transitions between interior and exterior spaces.

Expansive sliding walls open the central living zones to the landscape, while layered rooflines and generous eaves create shade and shelter in equal measure. It is a residence built to perform, to endure, and above all, to harmonize with its environment.





A Sophisticated design of Outlook and Intention

Palma's spatial arrangement speaks to both privacy and openness—celebrating long views while carving out moments of intimacy. A refined materials palette, inspired by the natural world, is paired with design restraint, allowing the home to sit quietly yet confidently in its setting.

Signature Elements

- Pavilion-style planning to enhance spatial flow and privacy
- Oversized openings and operable walls for seamless indoor-outdoor living
- Deep verandahs and shaded terraces for all-season enjoyment
- Elevated, view-oriented living areas designed for site-specific siting



Airlie Summit Luxe Design Collection

Disclaimer: Images shown are computer-generated (CGI) and are for illustrative purposes only. They may not accurately represent real-life products, features, or outcomes. Do not rely solely on these images for decision-making. For accurate and complete information, please consult Airlie Summit representative.

PALMA

by Valentine Building Design

Elevated Living, Naturally Framed

🚗 | 4 🚿 | 2.5 🚗 | 1

Internal Area: 230 sqm* (excluding garage)

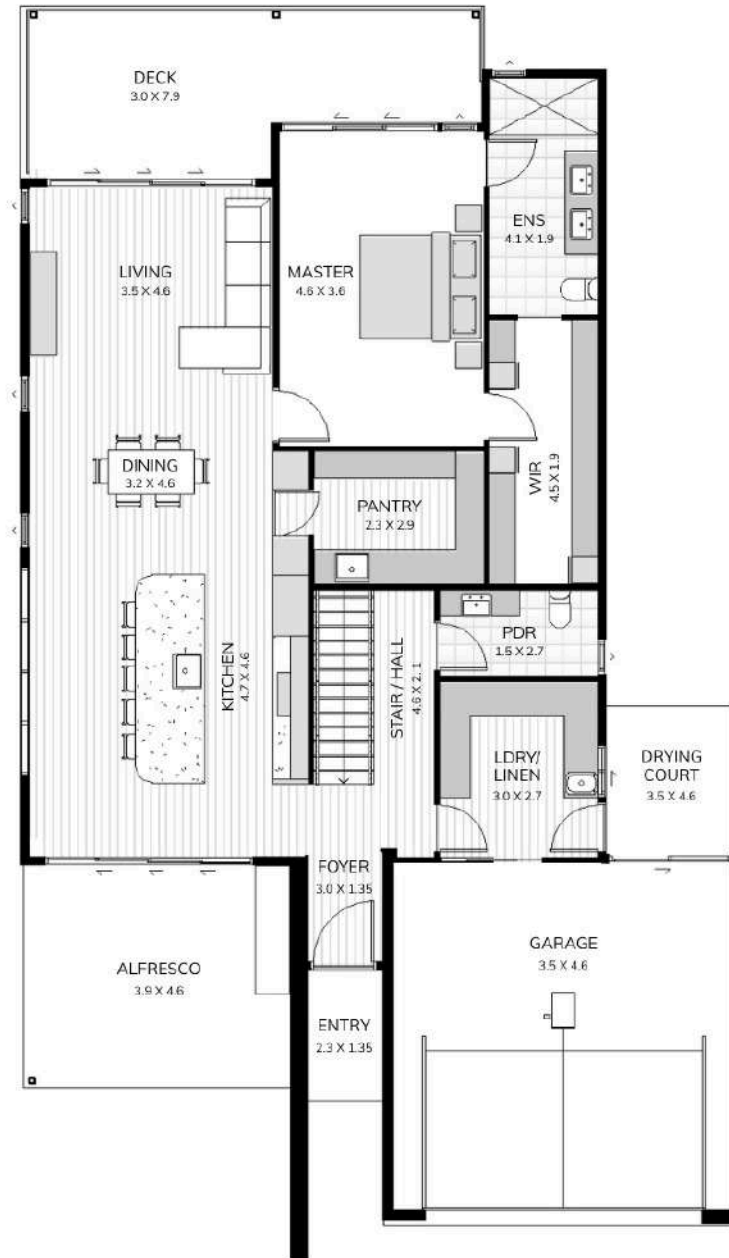
External Area: 34 sqm*

Minimum Lot Width: 15m

IMPORTANT LEGAL DISCLAIMER. PLEASE READ CAREFULLY. Indicative only. This floorplan/render has been provided to Alder Constructions Pty Ltd and its related entities (Alder) by an unrelated third party. It presents an example of what a purchaser may be able to build on certain lots in Airlie Summit. The final product may differ. Dimensions, design features, floor areas, specifications and room configurations are subject to detailed design and construction by any architect, builder or other contractor engaged by an interested person to design or construct a dwelling and any applicable legal requirements. Alder may introduce an interested person to potential Consultants on request, but Alder will not arrange the design or construction of a dwelling for an interested person. An interested person will be required to contract directly with a Consultant for the design and construction of their home.

FIRST FLOOR PLAN

NOT TO SCALE



SECOND FLOOR PLAN

NOT TO SCALE



The Fine Print

IMPORTANT LEGAL DISCLAIMER. PLEASE READ CAREFULLY.

All pictures, plans and other visual representations are indicative only. Dimensions, design features, floor areas, fittings, finishes, specifications, tiling, paving and floor finishes, landscape and paved areas are subject to detailed design and construction by any architect, builder or other contractor engaged by an interested person to design or construct a dwelling (Consultant) and any applicable legal requirements. Alder Constructions Pty Ltd and its related entities (Alder) may introduce an interested person to potential Consultants on request but will not arrange the design or construction of a dwelling for an interested person. Any furniture, finishes or other items or features shown will not be supplied by Alder. The final product may differ from the indicative designs depicted in this document and will be subject to any agreement between an interested person and a Consultant. Any views depicted may not be available depending on the detailed design and may be impacted by a variety of other factors including Council approval conditions, building configuration and design and nearby developments. Statements made are true to the best of Alder's knowledge. Neither Alder, nor its officers, employees or agents make any representation, give any warranty or accept any liability, relating to the accuracy or completeness of the information in this document, or for the act or omission of any Consultant appointed by an interested person. To the extent permitted by law, Alder disclaims all liability for these matters. Interested persons should make and rely on their own investigations and advice.

AIRLIE SUMMIT LUXE

DESIGN COLLECTION

Contact Us

Seaview Drive, Airlie Beach Qld
1800 156 841
airlie.summit@aldercon.com.au
www.airliesummit.com.au



ALDERCON
BUILDERS & DESIGNERS